

Donations Guide



All the details for what you can donate to
Hobart City Mission Op Shops

Things We Love

Furniture

We accept items that are in good enough condition to give to a friend or family member, such as:

- ✓ Furniture that is in good condition (and **NOT** on the CANNOT ACCEPT OR SELL list)
- ✓ Mattresses and/or bases that are **NOT** stained, torn, missing wheels etc and in **AS NEW** condition

****Please note that smaller stores do not accept donations of furniture due to space limitations.**

****Any donation drops offs that include quality furniture and white goods must be taken to our Moonah Mega-Store - access from Falls Carpark, Main Rd Moonah.**



Outdoor

- ✓ Outdoor dining sets
- ✓ BBQs without gas bottle - only if clean
- ✓ Lawn care items - electric only
- ✓ Building materials that are **NEW** and in original box (basins and sinks, etc)

Items We Don't Accept

Furniture

We don't accept any furniture that is damaged and unusable, broken or stained such as:

- ✗ Any furniture that is broken or missing parts (e.g. wardrobe missing a door, broken glass)
- ✗ Bean bags
- ✗ Mattresses and/or bases that are stained, torn, missing parts etc - **NO WIRE BASED BEDS**
- ✗ Pianos, organs and keyboard organs
- ✗ Large tables or wardrobes
- ✗ Lounges that have dog or cat hair on them
- ✗ Swing sets - any size

Due to Safety Standards we CANNOT accept any CHILDRENS FURNITURE

- ✗ Car seats, booster seats and baby capsules
- ✗ Cots and port-a-cots
- ✗ Cradles and baby walkers
- ✗ High chairs
- ✗ Prams and strollers

Outdoor

- ✗ Trampolines (playground equipment)
- ✗ Basketball hoops
- ✗ Washing lines (Hills Hoist style/fixed)
- ✗ All motorcycle, horse riding and bicycle helmets

We're grateful for all offers of donations. However, we can't accept all donations. Broken, dirty and damaged goods actually cost us money to dispose of.

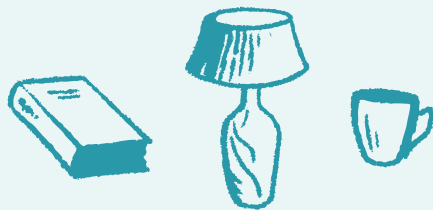
For items not accepted by Hobart City Mission Op Shops, please consider alternatives such as tip shops or by searching [Recycling plastics in Tasmania](#) and other [recycling services Rethink Waste](#).

Things We Love

Homewares & Bric-a-brac

We accept items that are in good enough condition to give to a friend or family member, such as:

- ✓ Mats and rugs (not large carpets)
- ✓ Cushions, linen, curtains
- ✓ Kitchenware, cutlery
- ✓ Glassware matching in sets
- ✓ Lampshades



CDs, DVDs & Vinyl

- ✓ CDs, DVDs, cassette tapes and vinyl records

Books

- ✓ Good condition, no pages missing or torn

Whitegoods/Electrical

We accept most electrical goods but only ones that have no visible damage to power cord. DO NOT require wiring /fitting by electrician and have an Australian Standard power point plug such as:

- ✓ Computers, screens and other IT
- ✓ Working flat screen LCD or LED TVs, sound systems, disc players
- ✓ Washing machines (depending on weight/size on a CASE-BY-CASE basis -NOT on the CANNOT ACCEPT OR SELL list)
- ✓ Fridges, freezers
- ✓ Other kitchen appliances

Items We Don't Accept

Homewares & Bric-a-brac

We don't accept any items that are damaged and unusable, broken or stained such as:

- ✗ Stained or worn mats, rugs, no large carpets
- ✗ Dirty/stained linen, cushions or curtains/ripped lining
- ✗ Kitchenware, cutlery stained or broken or chipped
- ✗ Stained, chipped or broken glass, crockery
- ✗ All blinds including Venetian and vertical blinds (unless brand new in packaging unopened) – due to cord choking risks – MUST HAVE warning labels about dangers to children

CDs, DVDs & Vinyl

- ✗ Burnt DVDs, CDs or VHS Tapes

Books

- ✗ Torn, ripped covers
- ✗ Names inside covers or any pages
- ✗ Highlighted or marked in any way

Whitegoods/Electrical

Items that require wiring /fitting by electrician or have visible damage on the power cord or do not have an Australian Standard power point plug such as:

- ✗ Ceiling lamps or fans
- ✗ Ovens
- ✗ Dishwashers
- ✗ Older style or plasma TVs
- ✗ Electric blankets
- ✗ Large/heavy OR Front Load washing machines (too hard/heavy to lift)

Things We Love

Clothing & Toys

All clothing and toys must be clean, ready to use (does not need any repair to zips, buttons etc):

- ✓ Clothing must be clean, not stained or ripped and **COMPLY** with Safety Standards
- ✓ Children's and baby clothes without ANY stains, odour, rips or tears. Children's and babies PJs **MUST** have a safety Warning Label
- ✓ Children's toys in new/ excellent condition

Accessories

All accessories must be clean and ready to use

- ✓ Accessories - including shoes, handbags and jewellery in excellent condition

Items We Don't Accept

Clothing & Toys

All clothing (particularly children's clothing) accessories & toys that are dirty, frayed, broken, stained, or have Safety Standards cannot be sold or given away:

- ✗ Bean bags or toys with beans/plastic pellet fillings
- ✗ Soiled or ripped clothing or accessories & nightwear without Danger/Warning labels
- ✗ broken, chipped or damaged toys
See **Baby Safe App** for more details.

No Medical Equipment

- ✗ Medical aids that have **Safety Standards** including wheely walkers, electric and manual wheelchairs and any other medical aid as there are requirements for servicing/ maintaining these that we are not able to verify. Search mandatory standards | ACCC Product Safety

Some items listed may need to be considered on a case by case basis - vintage, antique or rare- e.g from a Deceased Estate . Drivers have the authority to reject donations based on quality and safety

Thankyou



100% of profits at Hobart City Mission Op Shops support the work of Hobart City Mission, helping those in our community who need it most.

